

Beef Genomics Portfolio



Solutions driving genetic
progress today for stronger
herds tomorrow



Increased ROI, reduced inputs, and producing more valuable offspring are key reasons producers leverage genomic testing — ready to learn more?

Trusted for decades and continually advancing, the Igenity for Beef Cattle portfolio empowers commercial producers to build a brighter future through DNA-based selection strategies.



Igenity[®] BEEF

Built for and trusted by commercial cow-calf producers, this genomic selection tool includes:

- Igenity 1-10 scores for 18 maternal, health, performance, and carcass traits
- Eight decision indexes for ranking and selecting cattle based on herd goals
- Envigor™, BreedSeek, and SeekSire™ for building a complete breeding strategy

Powerful Information

A commercial cow often does not become profitable until 6 years of age.¹

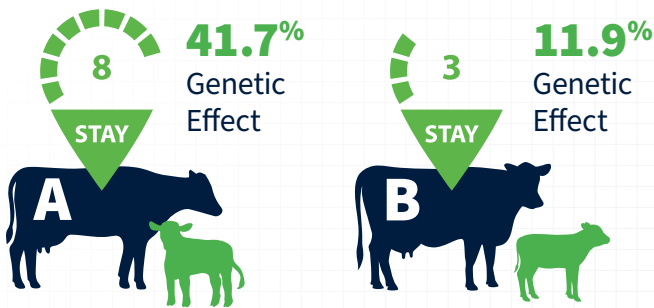


Figure 1. Heifer A's daughters will have a 29.8% higher probability of staying in the herd until 6 years of age compared to Heifer B's daughters.²

Igenity[®] FEEDER

Designed to market and manage feeder cattle as they move through the beef supply chain.

This genomic tool delivers two impactful indexes:

Igenity Terminal Index (ITI) and Days on Feed (DOF)

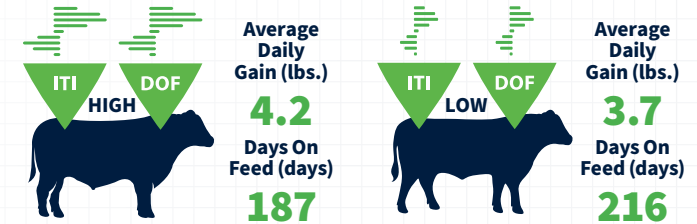


Figure 2. Above-average cattle for both indexes achieved higher daily gain (0.5 lbs.) with fewer days on feed (29 days).³

Add-on Content	
BreedSeek	Envigor

For Stockers

- Optimize calf sorting
- Retain the right feeders
- Differentiate cattle on sale day

For Feeders

- Sort to fine-tune days on feed
- Understand the closeout potential of each carcass
- Source cattle with Igenity Feeder results to streamline operations

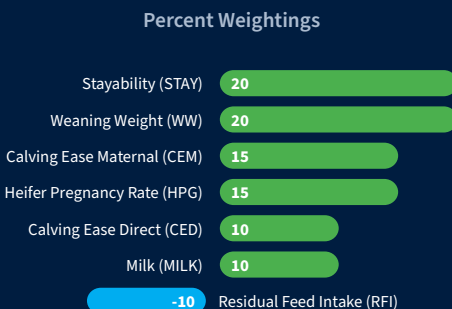
Decision Indexes

An index formulates an actionable value for driving long-term progress based on genomic results.

Featured Indexes:

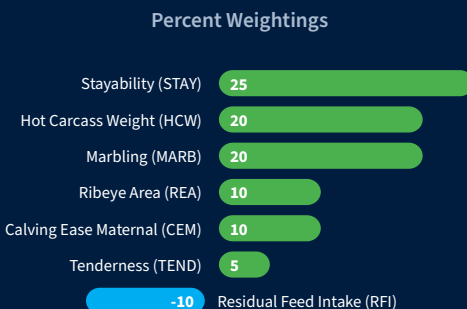
Igenity Maternal Index (IMI)

Develop high-quality replacements and market heavier, more profitable calves.



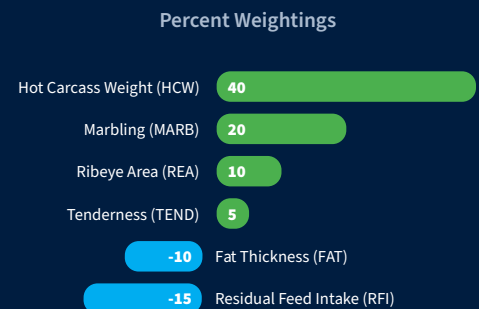
Igenity Production Index (IPI)

Balance maternal selection with high growth and carcass quality.



Igenity Terminal Index (ITI)

Enhance the potential for growth, efficiency, and carcass merit.



Additional indexes for sustainability and optimal days on feed give a complete blueprint for maximizing potential.



Demonstrate the value of genomically tested cattle with our Igenity Branded marketing program.

How it works:

- Test at least 35% of your calves.
- Using IMI (Igenity Beef only) or ITI (Igenity Beef or Igenity Feeder), your cattle are placed into one of four marketing groups based on the tested group’s average.



Elite

Top
Quartile



Premier

Second
Quartile



Choice

Third
Quartile



Tested

Bottom
Quartile

Igenity Branded gives cattle buyers confidence in your cattle’s potential.



This genomic EPD assesses genetic risk for Bovine Congestive Heart Failure. Accuracy and percent rank are delivered with each EPD.

The Impact of BCHF

In severely affected cattle pens, mortality rates have surged to 7%, translating to annual losses over \$250,000 for a single operation.⁴

Breeding for a Brighter Future

Incorporating Igenity BCHF in breeding and selection strategies provides a path for generational improvement.

Availability

Igenity Beef Add-on

Standalone Test

Heart Healthy

Heart Healthy is a Superior Livestock Auction Value-added Program demonstrating reduced risk based on Igenity BCHF results.



Envigor™

Reporting on a scale of 1 to 10, Envigor estimates the level of heterosis in crossbred cattle.

Valuable Data

Heterosis can vary within a single calf crop. A one-score increase leads to:

- 4% increase in the probability of a heifer breeding as a yearling.⁵
- 4% increase in the probability of a cow staying in the herd for six years.⁵
- 2% decrease in the probability of an animal having a health event.⁵

Use Envigor to select replacements benefiting the most from a crossbreeding program.

BreedSeek

This genomic test delivers primary and secondary breed with percent composition.

Useful Insight

- Maintain desired breed representation
- Verify breeds for targeted marketing opportunities
- Get the most from heterosis

SeekSire™

Enlist this genomic technology for verifying parentage of tested animals.

Quality Assurance

- Reduce the risk of inbreeding
- Trace calving problems and abnormalities
- Monitor breeding efficiency (Figure 3.)
- Track the lineage of elite heifers

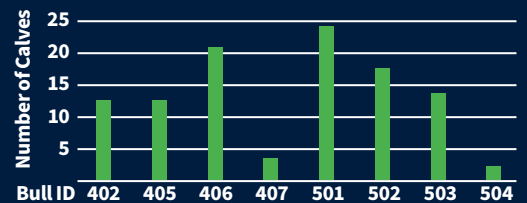


Figure 3. SeekSire data from this herd indicate that sire 407 and sire 504 are underperforming.⁶

Availability

Included with Igenity Beef

Igenity Feeder Add-on

Standalone Test

Availability

Included with Igenity Beef

Standalone Test



Take the Next Steps

The right plan paired with the right genomic data unlocks the potential of your cattle — ready to get started? First, **define goals** to leverage results effectively. **Establishing a baseline** is the next step; getting a snapshot of current genetics offers valuable insight to guide future decisions. From there, **balancing selection** becomes essential. Single trait selection can create setbacks in other areas; using a decision index aligned with defined goals ensures steady, well rounded progress. Throughout the process, **our team goes beyond data delivery**, supporting producers from sample collection to placing orders to confidently interpret results and get the greatest value from their data.

References:

1. Boyer, Christopher N., et al. "Reproductive Failure and Long-Term Profitability of Spring- and Fall-Calving Beef Cows." *Journal of Agricultural and Resource Economics*, vol. 45, no. 1, Jan. 2020, pp. 78–91.
2. Neogen Corporation. Internal Dataset, Jan. 2023.
3. Neogen Corporation. "Igenity Feeder Whitepaper." Table 1, Page 2, June 2025.
4. Heaton, M. P., et al. "Association of ARRDC3 and NFIA Variants with Bovine Congestive Heart Failure in Feedlot Cattle." *F1000Research*, vol. 11, 2022, article 385.
5. Neogen Corporation. Internal Dataset, Jan. 2020.
6. Neogen Corporation. Internal Dataset, Jun. 2020.

Learn more at neogen.com or contact us | 877-443-6489 | 402-435-0665 | dnahelp@neogen.com



Neogen Corporation, 620 Leshar Place, Lansing, MI 48912 USA.
© Neogen Corporation 2026. All rights reserved. Neogen and Igenity are registered trademarks of Neogen Corporation.
All other marks mentioned are the property of their respective owners.

LK00694_0526