



# Delivering Continuous Data Analysis of Routine Cleaning Monitoring

Neogen® Quality Control Data Manager

# Table of Contents

## Neogen Quality Control Data Manager—The data you need to quantify cleanliness

Overview	2
Features	3
Dashboard Views	4
Mobile Access	5
Reporting Overview	6
• General	6
• Endoscopy	7
• Environmental	8
• Surgical Instruments	9
The Value of Cleaning Monitoring Data	10
• Endoscope reprocessing	10
• Environmental surfaces	10



# Know with Confidence That They're Clean

The Clean-Trace® ATP Monitoring System provides quantitative, rapid cleanliness monitoring for:

- Flexible endoscopes
- Surgical instruments
- High-touch environmental surfaces

Routine monitoring of cleaning processes is important to demonstrate compliance to recognized standards, assure the efficacy of your processes, identify any problem areas to target for corrective actions and help provide a safer environment of care for the patient.

The Clean-Trace ATP Monitoring System has been adopted by many healthcare facilities as an important tool for quality control of cleaning environmental surfaces and endoscope or surgical instrument reprocessing.

The Neogen Quality Control Data Manager (QCDM) is a valuable part of the Clean-Trace ATP Monitoring System, providing **secure capture, storage, reporting and dashboard views** of cleaning test data.

The Clean-Trace ATP Monitoring System and the Quality Control Data Manager are backed by the full support of Neogen, including system set-up, in-service and training, staff and continuing education, technical expertise and equipment service, to help you implement a robust quality control program.



# Features

Powerful reporting options to manage and communicate results

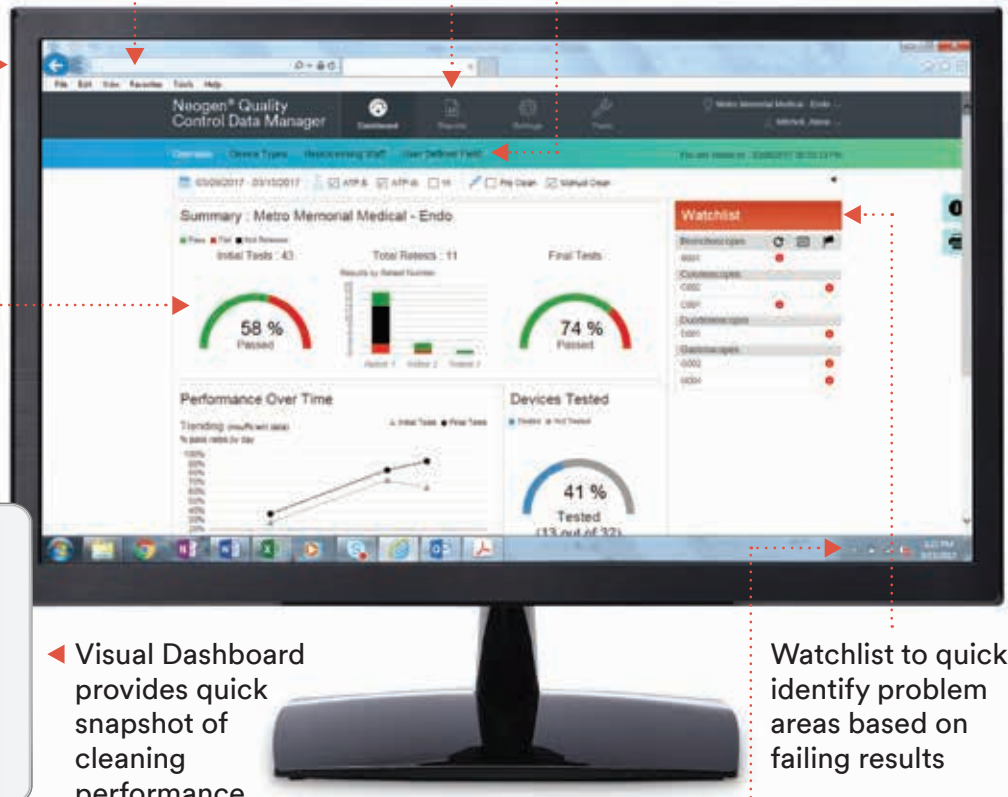
- Multifacility reporting with easy comparison across the IDN facility or system with identification of problem areas
- Automatic reporting for PDF report email delivery to specified recipients

Data hosted and managed on a secure Neogen server which employs state-of-the-art security

User defined fields for customization of the reporting—for example, cleaning chemicals used, or special projects

Click through to drill down on dashboard charts

Remote access to view dashboard on a tablet or smart phone



Visual Dashboard provides quick snapshot of cleaning performance summaries

Watchlist to quickly identify problem areas based on failing results

- Service and system updates provided by Neogen
- Neogen support for development of test plans, set-up and ongoing system support

Automatic, wireless data transfer from Neogen® Clean-Trace® Luminometer LX25 via Wi-Fi

**Ultimately, to provide data storage, reporting and analysis to:**

- Demonstrate compliance to policies and procedures consistent with recognized standards
- Provide evidence of effective cleaning practices compared to established benchmarks
- Identify problem areas to target develop corrective actions
- Continuously review cleaning procedures for on-going process improvement



# Dashboard Views

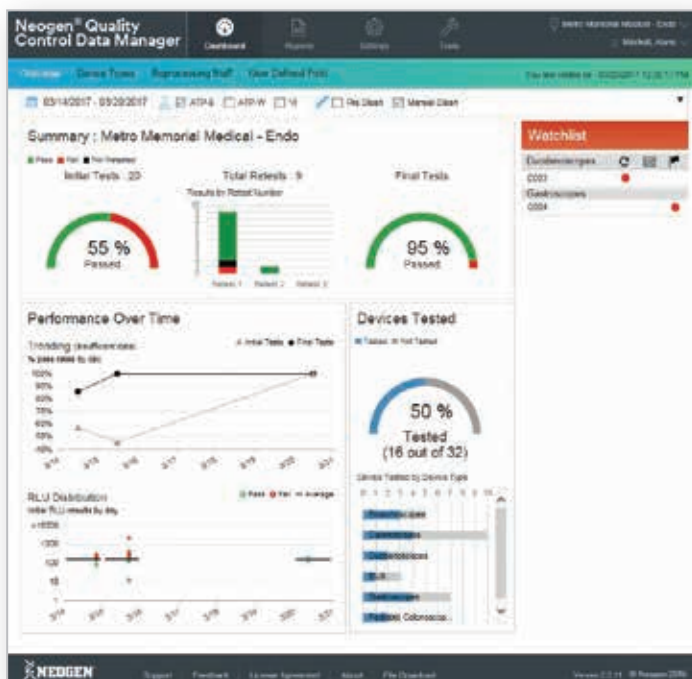


QCDM dashboards provide quick, easy, visual access to data including hover-over graphs to quickly see data point pop-ups. The dashboards provide 'Watchlists' for devices or test points with history on failure rates. Click on selected graphs to drill down to the next level of data for details on any particular test point, device, operator, or room.

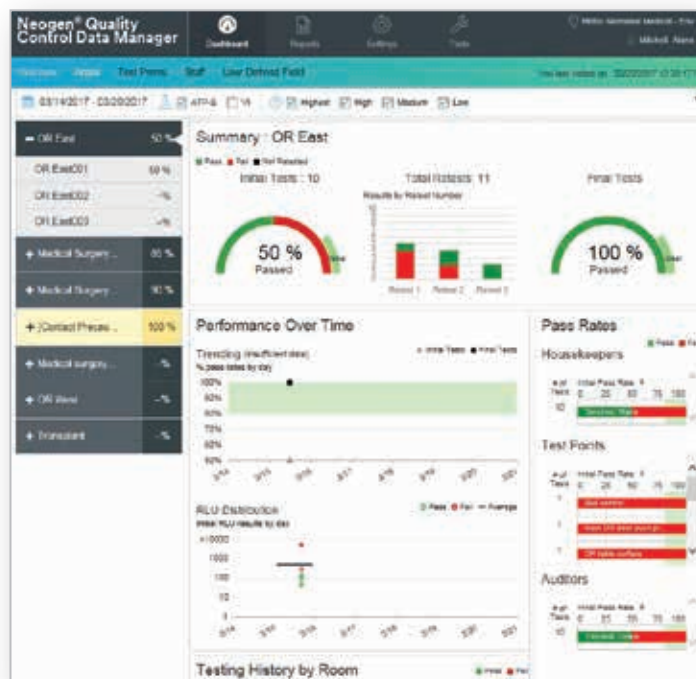
**Endoscope or Surgical Instrument Examples:**  
Summary, Device Type or Instrument, Reprocessing Staff, Test Plans (Surgical Instrument only) and User Defined Field View

**Environmental Surface Examples:**  
Summary, Area, Test Points, Staff and User Defined Field Views

Summary Dashboard Example

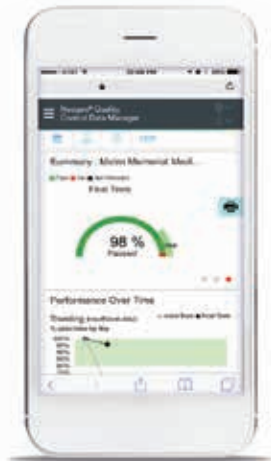


Area Dashboard Example



# Dashboard Mobile Access

The Neogen Quality Control Data Manager online hosted service is easily accessible on-the-go on your mobile device, such as tablets or smart phones, and allows you to check in on your staff and process performance at any time.



Easy to access at [qcdm.Neogen.com](http://qcdm.Neogen.com) on your mobile internet browser and simply log-in with your credentials



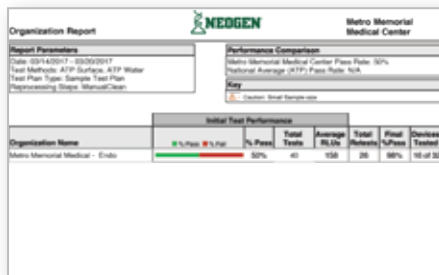
# Reporting and Data Export



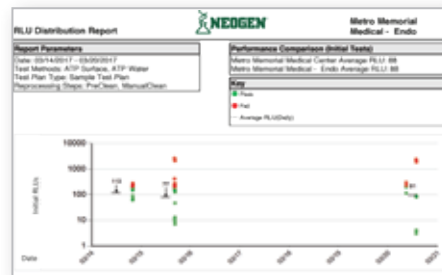
- Generate one time reports
- Schedule reports for automatic delivery to specified email addresses
- Flexibility to select date ranges and attributes to customize reports
- Ability to include data entered for visual inspection and microbial cultures
- Data export to a spreadsheet

## Report Types All Applications:

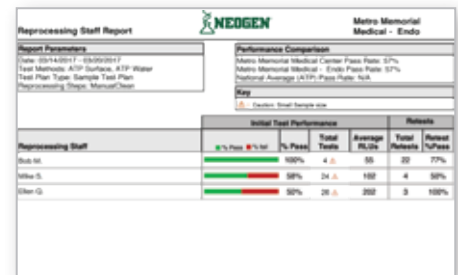
Organization Report Example



RLU Distribution Report Example



Staff Report Example



- Organization: Summary of pass/fail for entire organization
- RLU Distribution: Distribution of RLU measurements for specified date range and attributes
- Staff by user ID
- User Defined Fields: Cleaning chemicals, special projects, etc.
- Microbial culture: Results of microbial cultures for surfaces or devices





# Environmental Surfaces Specific Reports

Additional reports for environmental surface application:

**Organization by Area:** Results by organization and facility area—e.g. floor, department, etc.

Organization By Area		Metro Memorial Medical Center	
<b>Report Parameters</b> Date: 03/14/2017 - 03/09/2017 Test Methods: ATP Surface Test Plan Type: Sample Test Plan		<b>Performance Comparison</b> Metro Memorial Medical Center Pass Rate: 78% % Passing Goal: 80% National Average (ATP) Pass Rate: N/A	
		<b>Key</b> Δ: Caution: Small Sample Size	
Initial Test Performance			
Area	Organization	% Pass	Total Tests
Medical Surgery Floor 1	Metro Memorial Medical - Env	90%	10
Medical Surgery Floor 2	Metro Memorial Medical - Env	88%	20
Medical Surgery Floor 3	Metro Memorial Medical - Env	88%	20
OR East	Metro Memorial Medical - Env	50%	10
OR West	Metro Memorial Medical - Env	0%	0
Transplant	Metro Memorial Medical - Env	0%	0

**Area:** Results by facility area

Area Report		Metro Memorial Medical - Env	
<b>Report Parameters</b> Date: 03/14/2017 - 03/09/2017 Test Methods: ATP Surface Test Plan Type: Sample Test Plan		<b>Performance Comparison</b> Metro Memorial Medical Center Pass Rate: 78% % Passing Goal: 80% Metro Memorial Medical - Env Pass Rate: 78% National Average (ATP) Pass Rate: N/A	
		<b>Key</b> Δ: Caution: Small Sample Size	
Initial Test Performance			
Area	% Pass	Total Tests	Room Tested
Medical Surgery Floor 1	90%	10	1 of 6
Medical Surgery Floor 2	88%	20	4 of 4
OR East	50%	10	1 of 3
OR West	0%	0	0 of 3
Transplant	0%	0	0 of 6

**Test Points**

Test Point Report		Metro Memorial Medical - Env	
<b>Report Parameters</b> Date: 03/14/2017 - 03/09/2017 Test Methods: ATP Surface Test Plan Type: Sample Test Plan		<b>Performance Comparison</b> Metro Memorial Medical Center Pass Rate: 78% % Passing Goal: 80% Metro Memorial Medical - Env Pass Rate: 78% National Average (ATP) Pass Rate: N/A	
		<b>Key</b> Δ: Caution: Small Sample Size	
Initial Test Performance			
Test Point	% Pass	Total Tests	Room Tested
Anesthesia cart - CDSuction Knobs	100%	1	0
Bed rails / controls	100%	6	0
IV pump control	100%	1	0
Main OR light switch	100%	1	0
Nurse computer keyboard	100%	1	0
Overhead light	100%	1	0
Room inner door knob	100%	6	0
Tray table	100%	6	0
Toilet flush handle	80%	6	0
Call box / button	50%	6	0
Bathroom handrails by toilet	0%	0	0
Bathroom inner door knob / plate	0%	0	0
Bathroom light switch	0%	0	0
Bathroom sink	0%	0	0

**Test Points by Area**

Test Point By Area Report		Metro Memorial Medical - Env	
<b>Report Parameters</b> Date: 03/14/2017 - 03/09/2017 Test Methods: ATP Surface Test Plan Type: Sample Test Plan		<b>Performance Comparison</b> Metro Memorial Medical Center Pass Rate: 78% % Passing Goal: 80% Metro Memorial Medical - Env Pass Rate: 78% National Average (ATP) Pass Rate: N/A	
		<b>Key</b> Δ: Caution: Small Sample Size	
Initial Test Performance			
Area	% Pass	Total Tests	Room Tested
Medical Surgery Floor 1	90%	10	1 of 6
Medical Surgery Floor 2	88%	20	4 of 4
OR East	50%	10	1 of 3

**Test Points by Room**

Test Point By Room Report		Metro Memorial Medical - Env	
<b>Report Parameters</b> Date: 03/14/2017 - 03/09/2017 Test Methods: ATP Surface Test Plan Type: Sample Test Plan		<b>Performance Comparison</b> Metro Memorial Medical Center Pass Rate: 78% % Passing Goal: 80% Metro Memorial Medical - Env Pass Rate: 78% National Average (ATP) Pass Rate: N/A	
		<b>Key</b> Δ: Caution: Small Sample Size	
Initial Test Performance			
Room (Area)	% Pass	Total Tests	Room Tested
MSF1011 (Medical Surgery Floor 2)	100%	6	0
MSF1013 (Medical Surgery Floor 2)	100%	6	0
MSF1011 (Medical Surgery Floor 1)	90%	10	1

**Test Points by Housekeeper**

Test Point By Housekeeper Report		Metro Memorial Medical - Env	
<b>Report Parameters</b> Date: 03/14/2017 - 03/09/2017 Test Methods: ATP Surface Test Plan Type: Sample Test Plan		<b>Performance Comparison</b> Metro Memorial Medical Center Pass Rate: 78% % Passing Goal: 80% Metro Memorial Medical - Env Pass Rate: 78% National Average (ATP) Pass Rate: N/A	
		<b>Key</b> Δ: Caution: Small Sample Size	
Initial Test Performance			
Housekeeper	% Pass	Total Tests	Room Tested
Henry W.	90%	10	1



# The Value of Cleaning Monitoring Data

Neogen Quality Control Data Manager can help manage the data generated from your ongoing quality control efforts in endoscope, device and environmental cleaning. QCDM data analysis tools are a valuable mechanism to identify problem areas for corrective action, staff education needs, support risk analysis processes and help continuous quality improvement efforts.

## Endoscope and surgical instruments

As part of an endoscope or surgical instrument reprocessing routine quality control program, Neogen QCDM can help highlight:

- High failure rates indicating need for additional staff training
- Performance differences between facilities, device type, test point, staff or time of day to focus training efforts where it's needed most
- High failure rates on certain devices may indicate need for repair or service
- Damaged endoscopes or instruments that need repair/service because it repeatedly fails testing



## Environmental surfaces

As part of an environmental surfaces routine quality control program, Neogen QCDM can help highlight:

- High failure rates indicating need for additional staff training
- Performance differences between facilities, staff or time of day to focus training efforts where it's needed most
- Problem surfaces that may be difficult to clean



To learn more about the Clean-Trace ATP Monitoring System and the Neogen Quality Control Data Manager, contact your local Neogen sales representative or visit [info.neogen.com/Clean-Trace-healthcare](http://info.neogen.com/Clean-Trace-healthcare). Outside of the United States, contact your local Neogen office.

Catalog Number	Description	Packaging
LX25	Neogen Clean-Trace Luminometer (Includes 1 year Standard Limited Warranty*)	1 each/box
CM-SW200	Neogen Quality Control Data Manager	N/A
UXC	Neogen® Clean-Trace® Surface Test	10 pouches/case
H2O	Neogen® Clean-Trace® Water Test	10 pouches/case
WTK	Neogen® Clean-Trace® WTK Water Test Accessory Kit	Each/bag of 100
LX25EW	LX25 Extended Care Plan (2 additional years of warranty coverage*)	N/A

The Neogen Clean-Trace Luminometer LX25 comes with one-year free limited warranty. A two-year extended care plan is available for purchase and includes annual calibration and repair.

\*All manufacturer warranties, extended care plans, remedies and limitation of liability regarding the Neogen Clean-Trace Luminometer are available in the user manual.

