

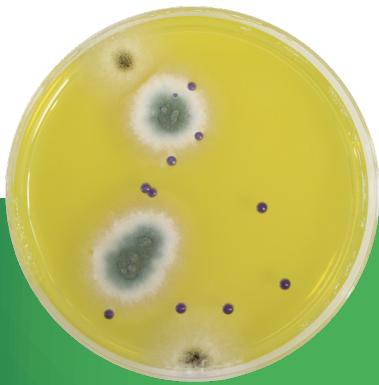


# Take more off your plate with One Plate.

## Introducing Neogen One Plate solutions.

Sometimes it feels as if there aren't enough hours in the day. But now you can cut your quality indicator testing time with One Plate, the only single-test method that's fully ISO-validated for all food types.<sup>1</sup> One Plate uses less media and requires less labor, with same or faster time-to-result.

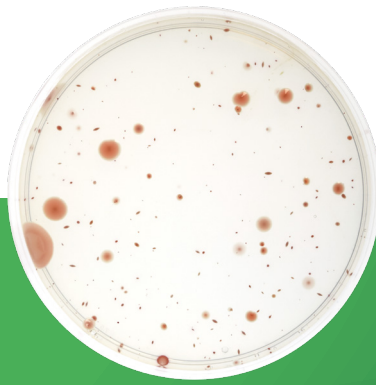
### One Plate Yeast and Mould



Up to  
**41% cost  
savings<sup>2</sup>**

*with  
54-hr vs. 120-hr TTR*

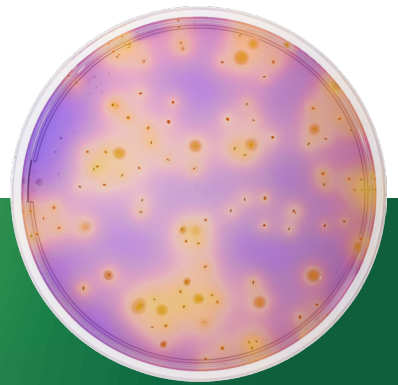
### One Plate Total Viable Count



Up to  
**45% cost  
savings<sup>2</sup>**

*with  
36-hr vs. 72-hr TTR*

### One Plate *Enterobacteriaceae*



Up to  
**51% cost  
savings<sup>2</sup>**

*Same TTR with added  
diagnostic features*

**Find out how you can streamline and save with One Plate.**

Request a cost comparison at [info.neogen.com/OnePlate](https://info.neogen.com/OnePlate).

<sup>1</sup> Validation studies performed on a broad range of foods

<sup>2</sup> Cost comparison is based on Neogen's ISO reference media vs. Neogen One Plate. The comparison assumes a single Neogen One Plate test vs. duplicate ISO tests. The analysis is based on the average selling price in Europe as of January 2024.

# Less hands-on time. Same or faster TTR.

One Plate lets you do **so much more with less**, giving you greater efficiencies and greater confidence. And with less labor and only half the tests, it's also more cost-efficient.

## Less media

to prepare to accommodate the **same** sample volume.



## Less plating time

means you can process samples **faster**.



## Fewer plates

take up **less** space in the incubator.



## Added diagnostic features

allow for **easier** interpretation.

## Ordering Information

Description	Format	Catalogue Number	Pack Size
One Plate Yeast and Mould	DCM	NCM1017A	500 g
One Plate Yeast and Mould	DCM	NCM1017B	5 kg
One Plate Yeast and Mould	DCM	NCM1017C	10 kg
One Plate Yeast and Mould	DCM	NCM1017D	25 Kg
One Plate Yeast and Mould Diagnostic Supplement	Supplement	NCM4088-50	1 x 100 mL bottle
One Plate Total Viable Count	DCM	NCM1018A	500 g
One Plate Total Viable Count	DCM	NCM1018B	5 kg
One Plate Total Viable Count	DCM	NCM1018C	10 kg
One Plate Total Viable Count	DCM	NCM1018D	25 Kg
One Plate Total Viable Count Diagnostic Supplement	Supplement	NCM4093-200	1 x 100 mL bottle
One Plate <i>Enterobacteriaceae</i>	DCM	NCM1019A	500 g
One Plate <i>Enterobacteriaceae</i>	DCM	NCM1019B	5 kg
One Plate <i>Enterobacteriaceae</i>	DCM	NCM1019C	10 kg
One Plate <i>Enterobacteriaceae</i>	DCM	NCM1019D	25 Kg

Find out how you can streamline and save at [info.neogen.com/OnePlate](https://info.neogen.com/OnePlate).

